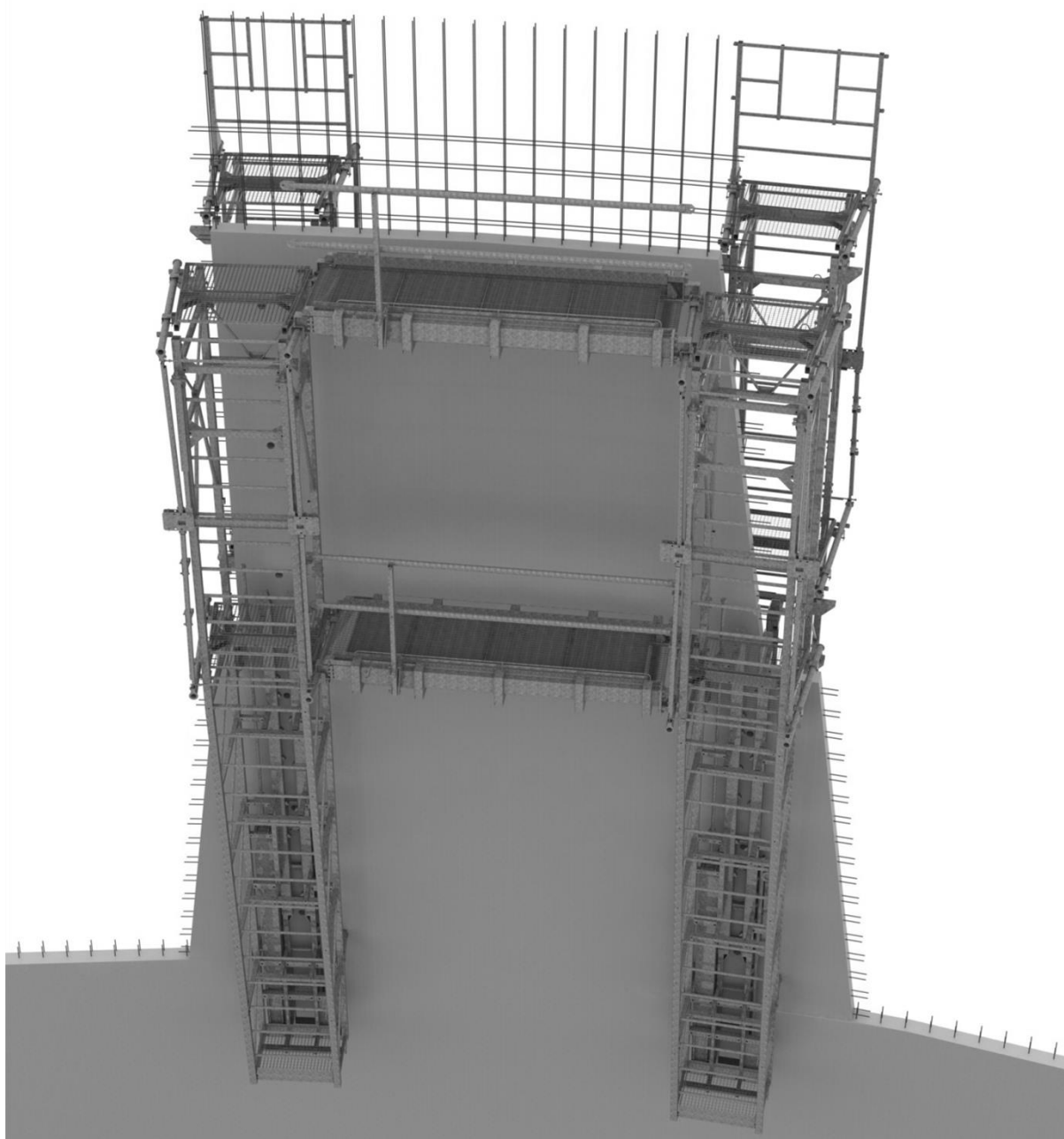

Set of device to shell build-up of natural draft cooling
towers

SZ-1

Real state report



Content:

General information's	3
Storage conditions	3
Present state	4
Parts summary	7
After sales service	7
Manufacturer, service organization	8
Equipment registration data	8
ES Declaration of Conformity	9
Notes.....	11

General information's

Set of device was developed, tested and manufactured for concrete cooling tower construction with height 128m at new source power plant Počerady, Czech Republic. Set of device is machine of big value, and because of this was developed for long-term storage. All parts, excluding mechanical drive parts, are hot dip galvanized in category C3. Technical development, supervision during testing and manufacturing, managing and controlling at construction site installation, supervision during cooling tower construction, managing dismantle and storage was provided by Mr. Tiefenbach MSc/ME (+420 776 706 249).

Storage conditions

Set of device was moved to storage in according with official conditions. Long-term storage is placed in Czech Republic. Whole set of device has been cleaned from concrete. Columns were disassembled to single parts. Hot dip galvanized parts are stored in storage, parts without surface finish has been cleaned, sort and stored in safety containers. Platforms has been cleaned, assembled and stored in storage. Formworks parts has been cleaned, stored in pallets at storage. Runways has been cleaned and stored in storage.

All columns, formwork parts and accessories also with big part of platforms were stored bellow roof construction, which protects stored material before rain and wind. Platforms rest part was stored on side of the roof construction also with runways. Not protected parts were all stored in seven transportation containers with higher security.

Present state

Inspection was done at 8.7.2016. All set of device parts were inspected in presence of seller and Mr. Tiefenbach (Company Mikrochladiče Praha Ltd.). It was found, that set of device is complete and because of the way of storing and surface finish – all parts are physically all right.



Picture 1 – Stored platforms, runways at background



Picture 2 – Stored runways



Picture 3 – Stored columns and accessories



Picture 4 – Column's parts, formwork parts



Picture 5 – Columns with accessories



Picture 6 – Stored platforms and formwork parts

Parts summary

Set of device contains following parts in present time:

- 76 universal columns
- 154 universal platforms
- 38 runways sets
- 3600 formwork parts in different variations (approx. number)
- Different purpose accessories
- 7 containers with columns mechanical parts, complete electrical equipment and different accessories.

During and after sales technical service will be provided by company Mikrochladiče Praha Ltd.

After sales service

Mikrochladiče Praha Ltd. service offer contains:

- All needed technical supervision service containing manufacturing documentation preparation including all know how gained during last working service when Počerady cooling tower has been constructed.
- Preparation of instruction manual, technological procedures documentation, static calculations for service, budget, service book and set the proper way of use.
- Supervision during manufacturing, assembly, testing, construction site installation, operating personnel training, construction site disassembly, long-term storage.
- Certified manufacturing securing of all new set of device parts.
- Service can be provided in English, Czech or Russian language.

Manufacturer, service organization

Manufacturer

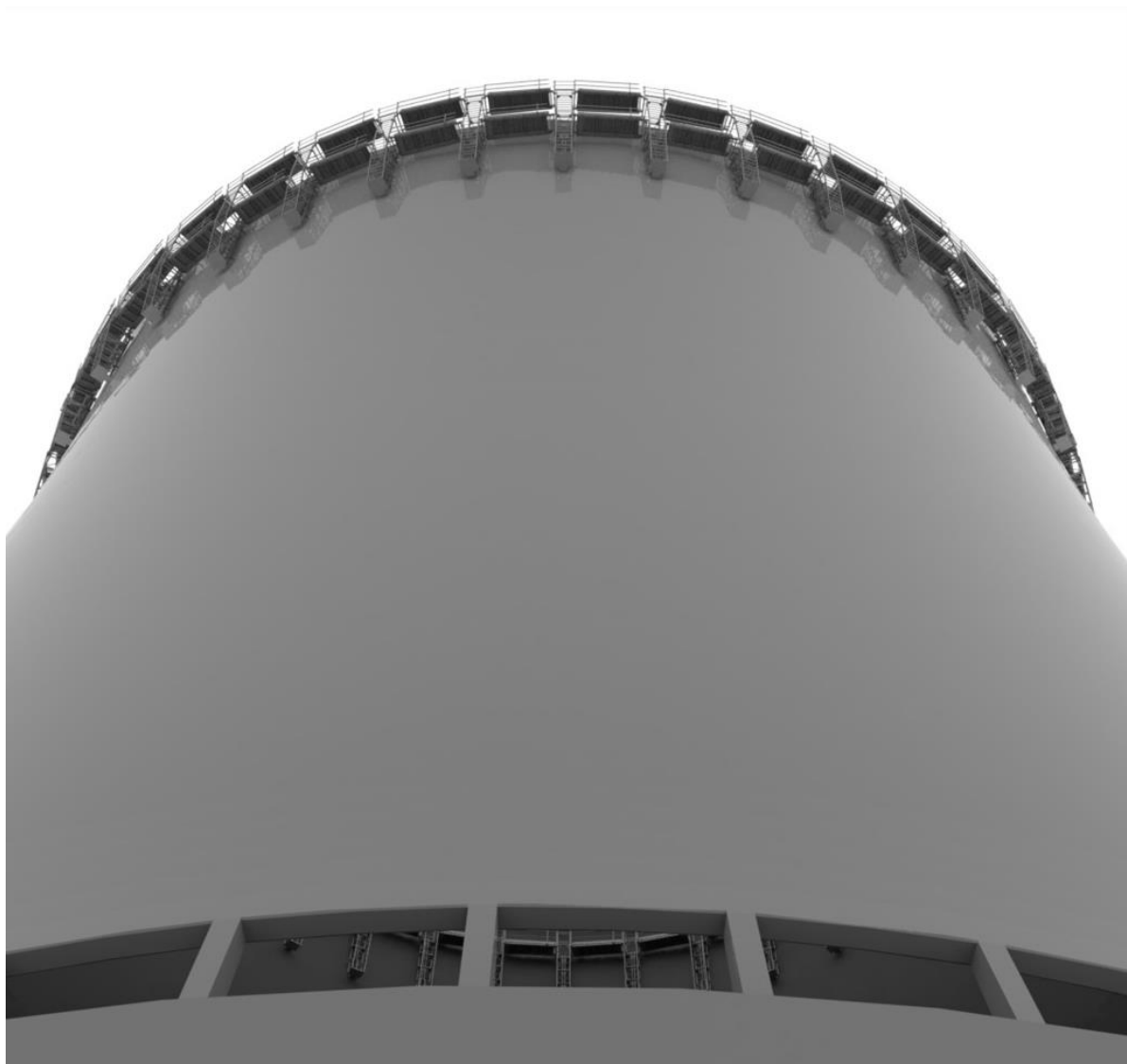
Chladicí věže Praha, a.s.
Politických vězňů 912/10
110 00 Praha 1
Česká republika/Czech republic

Service organization

Mikrochladiče Praha, s.r.o.
provozovna Slaný, Pražská 355
274 01 Slaný
Česká republika
info@mikrochladice.cz
+420 776 706 249
www.mikrochladice.cz

Equipment registration data

Name: Soubor zařízení pro tažení pláštěů chladicích věží / Set of device for cooling tower shell build up
Indication: SZ-1
Year of production: 2011
Series: 1



ES Declaration of Conformity

ES prohlášení o shodě

ve smyslu § 12, odst. 3, písm. a) a j) zákona č. 22/1997 Sb., ve znění pozdějších předpisů



Výrobce:

**CHLADICÍ VĚŽE PRAHA a.s., Politických vězňů 912/10,
110 01 Praha 1**

Výrobek:

Soubor zařízení pro tažení železobetonových plášťů chladicích věží s přirozeným tahem

Postup posouzení shody:

Posouzení shody podle níže uvedených nařízení vlády, bylo zajištěno výrobcem zařízení u akreditovaného inspekčního orgánu č. 4008 – Strojirenský zkušební ústav s. p., Hudcova 56b, 621 00 Brno a vydáno na základě inspekčního certifikátu č. I-63-0221/11/TC/K.

Zařízení odpovídá:

Nařízení vlády č. 176/2008 Sb., nařízení vlády č. 616/2006 Sb., nařízení vlády č. 17/2003 Sb.,

Použité technické normy:

ČSN EN 60204-1 ed.2	ČSN EN ISO 14121-1	ČSN EN 61140 ed.2
ČSN EN 60446 ed.2	ČSN EN 61000-6-2 ed.3	ČSN EN 61000-6-4 ed.2
ČSN EN 61000-6-3 ed.2	ČSN EN 953+A1	ČSN EN 983+A1
ČSN EN 12100-1+A1	ČSN EN 12100-2+A1	ČSN 73 2030

Potvrzení výrobce:

Jakožto výrobce výše uvedeného výrobku potvrzujeme, že vlastnosti uvedeného výrobku splňují základní požadavky na výrobky podle výše uvedených nařízení vlády. Výrobek je za podmínek obvyklého, popřípadě výrobcem určeného použití bezpečný. Výrobce přijal opatření, kterými zabezpečuje shodu výrobku uváděného na trh s technickou dokumentací a se základními požadavky na výrobky.

Označení  na výrobek umístěno: 2011

V Praze dne : 15.4. 2011

Lukáš CHMEL
Generální ředitel a předseda představenstva

EC Declaration of Conformity

in accordance with Article 12, Paragraph 3, Points a) and 1) of the Act No. 22/1997 Coll., as amended

CHLADÍCÍ VĚŽE PRAHA a.s.

CHLADÍCÍ VĚŽE PRAHA a.s., Politických vězňů 912/10,

110 01 Praha 1

Product:

Set of equipment to install reinforced concrete jackets of natural draft cooling towers

Compliance assessment procedures:

The assessment of compliance in accordance with the below specified decrees of the government was ordered by the manufacturer of the equipment from an accredited inspection body no. 4008 – Strojírenský zkušební ústav s.p., Hudcova 56b, 621 00 Brno and was issued on the basis of inspection certificate no. I-63-0221/11/TC/K.

Equipment conforms with:

Decree of the Government No. 176/2008 Coll., Decree of the Government No. 616/2006 Coll., Decree of the Government No. 17/2003 Coll.,

Used technical standards:

ČSN EN 60204-1 ed.2

ČSN EN 60446 ed.2

ČSN EN 61000-6-3 ed.2

ČSN EN 12100-1+A1

ČSN EN ISO 14121-1

ČSN EN 61000-6-2 ed.3

ČSN EN 953+A1

ČSN EN 12100-2+A1

ČSN EN 61140 ed.2

ČSN EN 61000-6-4 ed.2

ČSN EN 983+A1

ČSN EN 73 2030

Confirmation by the manufacturer:

As a manufacturer of the above specified product we hereby confirm that the properties of the said product meet basic requirements concerning products in accordance with the above specified decrees of the government. The product is safe under the conditions of usual use or use specified by the manufacturer. The manufacturer adopted measures that ensure conformity of the product being launched with technical documentation and with basic requirements concerning the products.

Symbol CE put on the product in: 2011

Prague on: 15 April 2011

Lukáš CHMEL

Chief Executive Officer and Chairman of the Board of Directors

Notes

