

Technical specifications

Reach*

Front mounted mower 6.7 m / 7.2* m
Verge mower 3.0

Designed for model

U400 / U500

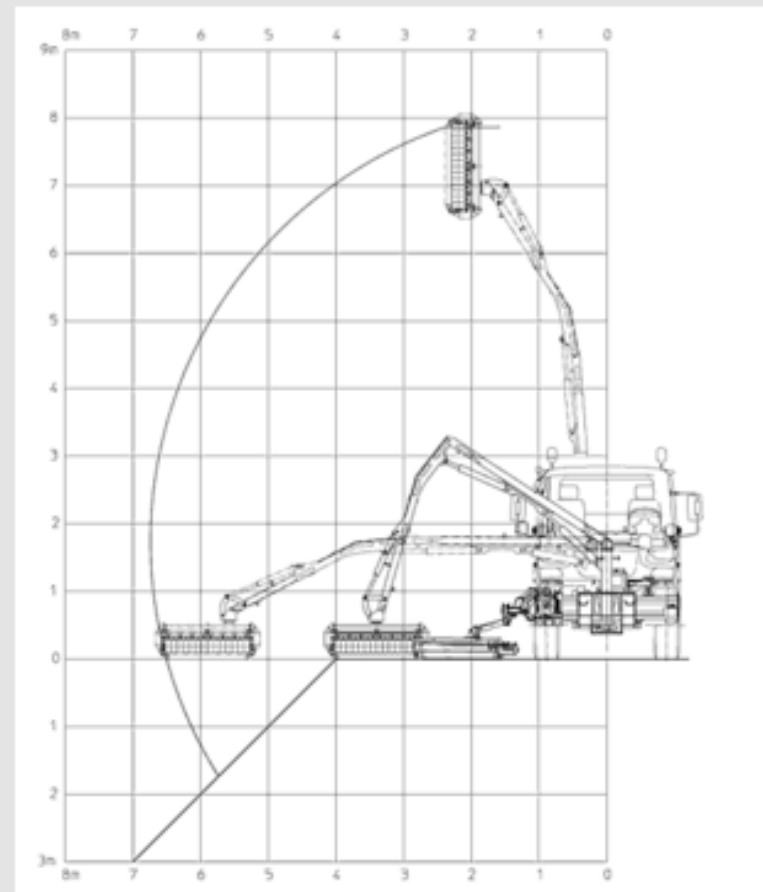
Lateral shift

Front mower 850 mm / 1300* mm

Special features

- Proportional control with CAN-Bus
- Automatic parking / extending of the verge mower
- Automatic touch control and arm relief system m|tronic

Reach diagram



Reach diagram of the MKM 700

* after dismounting of the verge mower / All range data indicated refer to the maximum possible values measured from the centre of the vehicle and with a 1.20m mowing head